

A large, faint, light gray chemical structure is centered in the background. It features a complex arrangement of fused and connected rings, including a benzene ring at the top left, a five-membered ring with two oxygen atoms at the top right, and a large polycyclic system at the bottom consisting of several fused six-membered rings.

CO2 SNOW THERAPY

Skin Renewal System

CO2 SNOW THERAPY

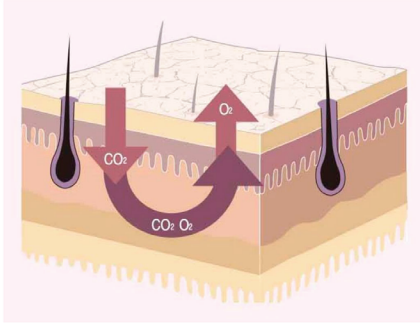
CO2 Serum + Technical Sheet

- ✓ CO2 penetration into the skin
- ✓ Oxygen Emission & Positive Stimulation
- ✓ Supply of New oxygen and improvement of skin problem



#Pore Shrink Pack #Skin Improvement Pack #Special Care Pack

The PRINCIPLE of CO2 SNOW THERAPY

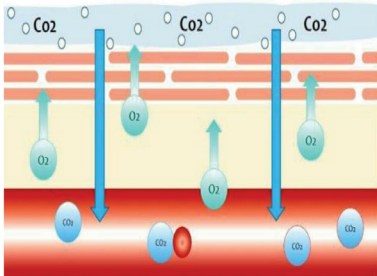


CO2 Absolute Serum Meets Special Sheet Containing Citric Acid to Generate Carbonation

Skin preparation and sebum discharge through the exchange process of oxygen and carbon dioxide (bore effect)

Stimulates elastin in the skin to improve elasticity, shrink pores, improve skin texture, Improvement of skin problems such as whitening effect

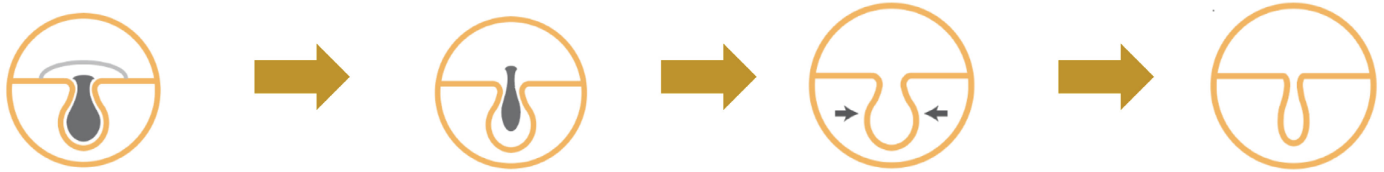
“Bore Effect”



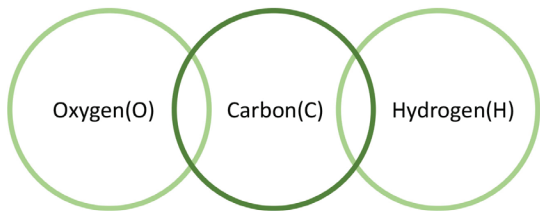
The effect of oxygen dissociation increases as the concentration of carbon dioxide in blood vessels increases

CO₂ skin penetration
↓
Oxygen release out of the skin
↓
New oxygen supply to cell tissue
↓
Sebum drainage and increased pore shrinkage

The Characteristics of CO2 SNOW THERAPY



Continuous and effective pore tightening with "Bore Effect ", CO2 therapy that helps to clean pores and shrink pores by helping to remove skin impurities and deep cleansing pores



It is made of biodegradable organic substance which is a combination of oxygen (O) + carbon (C) + hydrogen (H)
Eco-friendly mask sheet that is safe and hardly causes skin problems



CO2 SNOW THERAPY Differentiation "Intensive Repair Ampoule"
Regenerated ampoule containing "Milk Protein Extract",
an anti-aging new material, which clearly differentiates itself from other products,
and maximizes customer satisfaction and skin improvement.

The Effect of CO2 SNOW THERAPY



Pore Deep Cleansing for Clear Skin

Improves skin complexion by removing waste and penetrating active ingredients



Firm, Smooth, Balanced Skin

Lifting effect on sagging skin due to elastin stimulation



Total Skin Care Manages Skin Problems

Overall skin improvement including acne improvement, pore reduction and moisturizing effect



Face Line Management

Helps relieve swelling, providing facial line clean-up

The Characteristics and Ingredients of CO2 Technical Sheet

Sheet made of biodegradable organic substance consisting of
Oxygen (O) + Carbon (C) + Hydrogen (H)
meets CO2 serum and melts, so that active ingredients penetrate into skin



lavender extract

Suppression of external active substances

Helps with skin health

Cycle activation

Calming the skin



Hydrolyzed Collagen

Improved elasticity and anti aging

Collagen autogenous ability improvement

Increased fiber cell density

Skin hydration



Gold and Silver Extract

Skin moisturizing effect

Harmful oxygen removal

Skin texture improvement

Anti-inflammatory effect



Camellia Flower Extract

Skin soothing effect

Atopic Skin Improvement

Aging delay effect

Antioxidant activity

The Characteristics and Ingredients of CO2 Absolute Serum

Activated technical sheet to produce CO₂ → penetrates into the skin to release oxygen and waste
Positive stimulation improves skin by shrinking pores, improving skin tone, and enhancing elasticity



Papaya Fruit Tree

Antioxidative effect
Pore cleaning effect
Immunity enhancing effect
Proteolytic effect



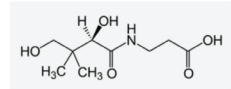
Salix Alba(White Willow) Bark Extract

Softening of dead skin cells
Soothing the troubled skin
Blocking moisture evaporation



Poria Cocos Sclerotium Extract

Nourishing the skin
Softening of the skin texture
Moisturizing the skin
Calming the skin



Panthenol

Hydration
Calming the skin
Maintaining moisturizing power
Skin conditioning

HOW TO USE



① After cleansing, arrange the skin texture with toner.

② Apply 1/2 of the Intensive Repair Serum to the face and neck for absorption.

③ Using the supplied spatula, apply the absolute gel (CO₂ gel) to the face and neck, being careful not to touch the area around the eyes.
"Use avoiding the eye area."

④ Apply the technical sheet to the face evenly.

⑤ After about 10 minutes, apply the remaining absolute gel (1/3) over the technical sheet again.

⑥ When the carbonation reaction is over after 10 minutes, remove the technical sheet and clean the face.

⑦ Apply the remaining Intensive Repair Serum (1/2) to the face for absorption, then finish.



MY *B*EAUTY SOURCES

mybeautysources.com